

# Maths With Measure

## Challenge Cards

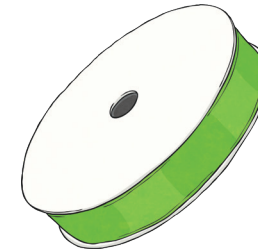


Maths With Measure: Question One



I have a 2m piece of ribbon and use 50 cm of it to make a card.

**How much ribbon do I have left?**



twinkl.com

Maths With Measure: Question Two



**Show your working out.**

How many 25mm slices of rock can be made from one 10cm piece of rock?



twinkl.com

Maths With Measure: Question Three



Imperial measurements: **oz and inches**  
Metric measurements: **grams and millimetres**

1oz = **30g**

1 inch = **25mm**

**What are the metric measurements of these?**

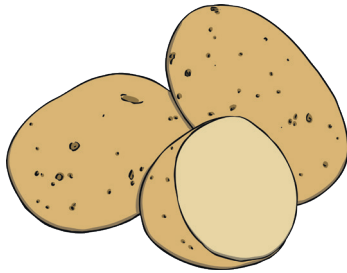
- a. 6 oz      b. 2 oz      c. 12 oz      d. 4 inches      e. 3 inches

twinkl.com



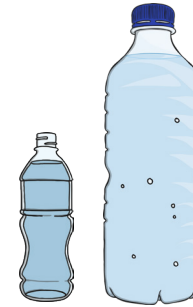
I have a 8kg bag of potatoes, but dropped half of them on the way home.

**How many kilograms of potatoes do I have left?**



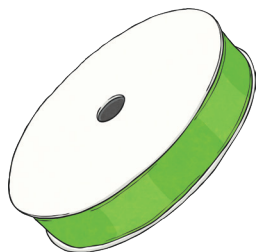
There is 500ml of water in the small bottle. The big bottle contains **3** times as much.

**How much water is in the big bottle?**



I have a 5m piece of ribbon and use 50cm of it to make a card.

**How much ribbon do I have left?**



**Show your working out.**

How many 25mm slices of rock can be made from one 3m piece of rock?



Imperial measurements: **oz and pints**

Metric measurements: **grams and millilitres**

1oz = **30g**

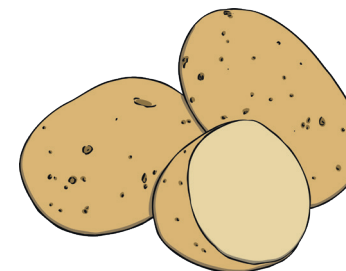
1 pint = **568ml**

**What are the metric measurements of these?**

- a. 10 oz    b. 6 oz    c. 7 oz    d. half a pint    e. 8 pints

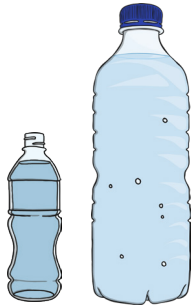
I have a 20kg bag of potatoes, but dropped a quarter of them on the way home.

**How many grams of potatoes do I have left?**



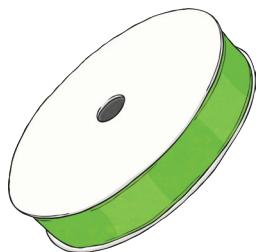
There is 500ml of water in the small bottle. The big bottle contains 6 and a half times as much.

**How much water is in the big bottle?**



I have a 6m piece of ribbon and use 53.5 cm of it to make a card.

**How much ribbon do I have left?**



**Show your working out.**

How many 25mm slices of rock can be made from one 8.5m piece of rock?



Imperial measurements: **oz, pints and gallons**

Metric measurements: **grams, millilitres and litres**

1oz = **30g**

1 pint = **568ml**

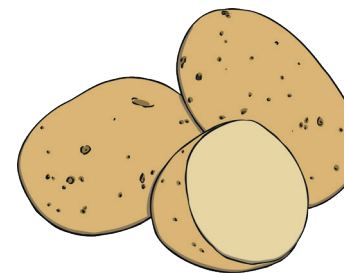
1 Gallon = **4.5l**

**What are the metric measurements of these?**

- a. 5 oz    b. half a pint    c. 9 oz    d. 3 pints    e. 16 oz  
f. 6 and a half pints    g. 3 gallons    h. 7 gallons

I have a 24kg bag of potatoes, but dropped half of them on the way home.

**How many grams of potatoes do I have left?**



There is 500ml of water in the small bottle. The big bottle contains 8 and a quarter times as much.

**How much water is in the big bottle?**

